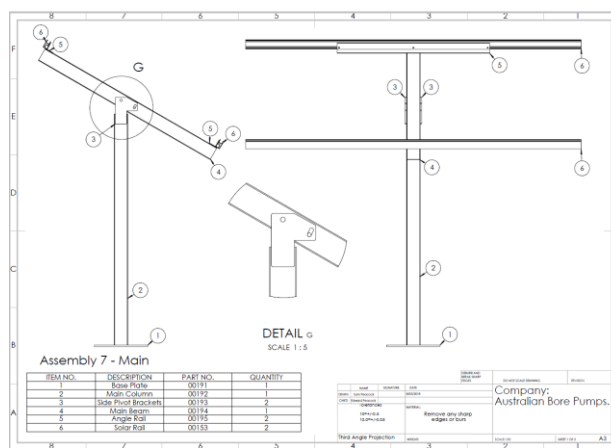


## DC1 Solar Pump installation Guide

- Up pack the goods and check for any damage
- Allow approximately 2 hours for this install
- Using 3 bags of quick set - set the base pole into the foundation minimum 350mm set into the quick set concrete - usually 300mm dia. X 500mm deep -
- check the pole flange is level in both directions. Face due North



While the base is setting - the pump can be placed into the bore / tank / dam – ensure the pump has a S/S safety cable attached when lowering into a bore. Generally, 1 1/4" green stripe pipe is used. Maximum pressure being 800 KPa. Also ensure the pump outlet has a non-return valve attached to the outlet.



It is a good idea if the bore output is not known – to install a low water level switch 300MM above the pump inlet – these are available as an option.

- Once the base is set and firm – the frame can be assembled. Now place the cross beam into the main pole with the long side facing North – 1 x M16 bolt
- Bring the tilt angel support up-right and bolt to the main cross beam at the front. 1 x M12 bolt



- It is a good idea to keep the main top of the frame horizontal while assembling and also when attaching the solar panels
- Now connect the pump controller – ensure the DC isolator is switched **off**
- Plug the MC4 connectors from the solar panels into the DC1 solar controller
- Plug the pump cable socket into the female socket on the underside of the control box.
- Connect any accessories provided later – check the pump is working first.
- Turn the DC isolator to the **ON** position.
- The green power light will light up in the control box.
- Check the speed control knob inside the cabinet is switched on.
- If there is enough sunlight – the green battery light will light up – then change to solar.
- Once the solar light is on – if it starts to flash it is supposed to (MPPT functioning)



- If installing a tank level switch – 'T' connects to the two open wires on the control box. These are a normally open connection.
- When installing a bore low water level switch 'W' connect to the two wires joined together – this is a normally closed connection.
- The pressure switch also attached to 'T' – if used with a low water sensor these are installed in series.

Any questions or problems – please do not hesitate to contact us.

Thanks